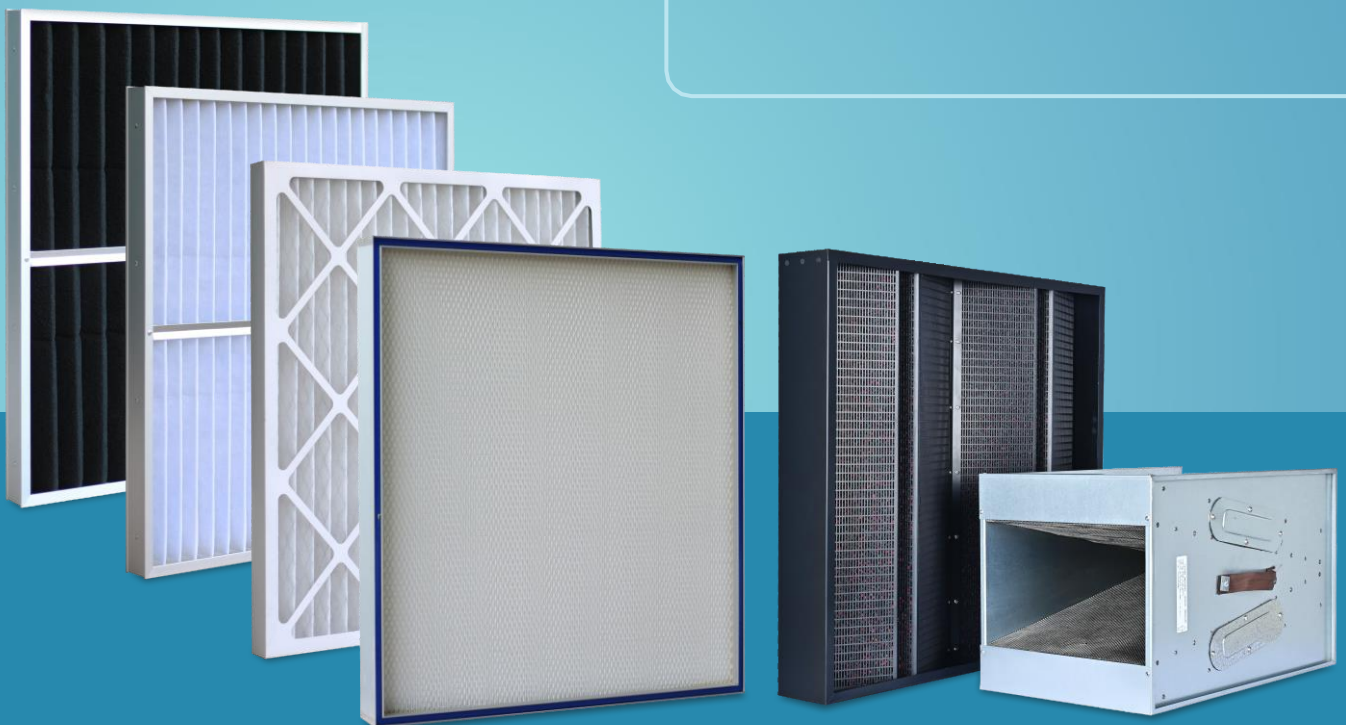




Filters and Air Purification Products

Particulate Filters
HEPA Filters
Gas Phase Filters
Automobile Paint Booth Filters

Terminal HEPA Boxes
UVPCO Modules
Fan Filter Units



About the Company

Citizen Industries is a quality-oriented organization. For all its product range, the company has state of the art manufacturing facility supported by required testing equipment to ensure consistent quality to the customers. The company is involved in manufacturing many hi-tech equipment and foreign substitute products. The range of Filters and Air Purification Equipment offered by the company serves Pharmaceutical, Automotive, Fertilizers, Power Plants, Hotels, Offices, Malls, Clean Rooms, Chemical, Petro-chemical, Food & Beverage Industries and public areas like Airports, Community Halls, Theatres.

Established in: 1987

Corporate Office: Navrangpura, Ahmedabad

Works: 1. GIDC, Naroda, **Ahmedabad**

2. KIADB Industrial Area, Hoskote, **Bangalore**

Employment: Approx. 450 personnel

Turnover (In FY 2021-22): Approx. INR 700 million

Third Party Certifications:

- **ISO 9001:2015** - Quality Management System
- **ISO 14001:2015** - Environmental Management System
- **ISO 45001:2018** - Occupational Health and Safety Assessment
- **UL Listing** - For Filters Class MERV 8, MERV 11 and MERV 14
- **SEFA-8 & SEFA-10** - Quality Certification for Lab Furniture
- **BIFMA - HCF-8.1** - Safety Performance & Sustainability Standards for Furniture
- **ASHRAE 110-2016** - For Fume hood Performance Testing
- **EN 14175** - European Standard for Fume hoods

Local Partner



About us ...

Our visionary team brings a wide range of varied expertise to the table, all to meet a single goal - helping our clients navigate the complexities of today's food, Pharma industry & Facilities maintenance knowledge through vision and innovative solutions.

Prefilters

Disposable type filters



Technical Data

Grade	G3 / MERV 5 / MERV 6		G4 / MERV 7 / MERV 8
Standard	As per ASHRAE 52.2 and EN779		
Frame	Cardboard, Cassette Type		
Media	Mesh laminated polyester media		
IPD at 2.5 m/s Air Velocity	4mmwg	5mmwg	
Recommended Air Velocity	2.5 m/s max		
FPD	18 mm wg		
Average Arrestance	80% 5 Am < 90%	90% 5 Am	
Suitable Usage Condition	Up to 45°C and RH 70%		
Standard Dimensions (Non standard dimensions can be offered on request)	H	W	D
	610	610	50
	610	305	50
	305	610	50
	305	305	50

Disposable type filters - UL Listed



Technical Data

Grade	MERVS		
Standard	As per ASHRAE 52.2 and EN779		
Frame	Cardboard, Cassette Type		
Media	Mesh laminated polyester media		
IPD at 2.5 m/s Air Velocity	4mmwg		
Recommended Air Velocity	2.5 m/s max		
FPD	18 mm wg		
Average Efficiency	90% 5 Am		
Suitable Usage Condition	Up to 45°C and RH 70%		
Standard Dimensions (Non standard dimensions can be offered on request)	H	W	D
	610	610	50
	610	305	50
	305	610	50
	305	305	50

Pre-Filter with Metallic Frame - Cassette Type



Technical Data

Grade	G3 / MERV 5 / MERV 6		G4 / MERV 7 / MERV 8
Standard	As per ASHRAE 52.2 and EN779		
Frame	Aluminum / GI / SS - Cassette type		
Gasket (optional)	Food grade, XLP / Neoprene		
Media	Non-woven synthetic media between Aluminum and HOPE mesh		
IPD at 2.5 m/s Air Velocity	4mmwg		5 mm wg
Recommended Air Velocity	2.5 <i>mis</i> max		
FPD	23 mm wg		
Recommended Cleaning	at 15 mm wg		
Average Arrestance	80% :5 Am <90 %		90% :5 Am
Suitable Usage Condition	Up to 70°C and RH 70%		
Cleaning Properties	Water wash with / without mild detergent		
Standard Dimensions (Non standard dimensions can be offered on request)	H	W	D
	610	610	50
	610	305	50
	305	610	50
	305	305	50

Pre-Filter with Metallic Frame - Flange type



Technical Data

Grade	G3 / MERV 5 / MERV 6		G4 / MERV 7 / MERV 8
Standard	As per ASHRAE 52.2 and EN779		
Frame	Aluminum / GI / SS - Flange type		
Gasket (optional)	Food grade, XLP / Neoprene		
Media	Non-woven synthetic media between Aluminum and HOPE mesh		
IPD at 2.5 m/s Air Velocity	4mmwg		5mmwg
Recommended Air Velocity	2.5 <i>mis</i> max		
FPD	23 mm wg		
Recommended Cleaning	at 15 mm wg		
Average Arrestance	80% :5 Am < 90%		90% :5 Am
Suitable Usage Condition	Up to 70°C and RH 70%		
Cleaning Properties	Water wash with / without mild detergent		
Standard Dimensions (Non standard dimensions can be offered on request)	H	W	D
	610	610	50
	610	305	50
	305	610	50
	305	305	50

Fine Filters Pleated Media - Cassette Type

Technical Data



Grade	F5 / MERV 9 / MERV 10		
Standard	As per ASHRAE 52.2 and EN779		
Frame	Aluminum / GI / SS - Cassette type		
Gasket (optional)	Food grade, XLP / Neoprene		
Media	Non-woven synthetic media between Aluminum and HOPE mesh		
IPD at 2.5 m/s Air Velocity	6 to 6.5 mm wg		
Recommended Air Velocity	2.5 <i>mis</i> max		
FPD	38 mm wg		
Recommended Cleaning	at 28 mm wg		
Average Efficiency	40 % :5 Em < 60%		
Suitable Usage Condition	Upto 70°C and RH 70%		
Cleaning Properties	Water wash with / without mild detergent		
Standard Dimensions	H	W	D
(Non standard dimensions can be offered on request)	610	610	3051150
	610	305	3051150
	305	610	3051150
	305	305	3051150

Fine Filters Pleated Media - Flange Type

Technical Data



Grade	F5 / MERV 9 / MERV 10		
Standard	As per ASHRAE 52.2 and EN779		
Frame	Aluminum / GI / SS - Flange type		
Gasket (optional)	Food grade, XLP / Neoprene		
Media	Non-woven synthetic media between Aluminum and HOPE mesh		
IPD at 2.5 m/s Air Velocity	6 to 6.5 mm wg		
Recommended Air Velocity	2.5 <i>mis</i> max		
FPD	38 mm wg		
Recommended Cleaning	at 28 mm wg		
Average Efficiency	40% :5 Em < 60%		
Suitable Usage Condition	Up to 70°C and RH 70%		
Cleaning Properties	Water wash with / without mild detergent		
Standard Dimensions	H	W	D
(Non standard dimensions can be offered on request)	610	610	3051150
	610	305	3051150
	305	610	3051150
	305	305	3051150

Fine Filters Pleated Media - Cassette Type

Technical Data



Grade	F6 / MERV 11 / MERV 12		
Standard	As per ASHRAE 52.2 and EN779		
Frame	Aluminum/ GI/ SS - Cassette type		
Gasket	Food grade, XLP / Neoprene		
Media	Non-woven synthetic media between Aluminum and HDPE mesh		
IPD at 2.5 m/s Air Velocity	6to 7.5 mm wg		
Recommended Air Velocity	2.5 <i>mis</i> max		
FPD	38 mm wg		
Recommended Cleaning	at 28 mm wg		
Average Efficiency	60% ;,; Em < 80%		
Suitable Usage Condition	Upto 70°C and RH 70%		
Cleaning Properties	Water wash with / without mild detergent		
Standard Dimensions	H	W	D
(Non standard dimensions can be offered on request)	610	610	305/150
	610	305	305/150
	305	610	305/150
	305	305	305/150

Fine Filters Pleated Media - Flange Type

Technical Data



Grade	F6 / MERV 11 / MERV 12		
Standard	As per ASHRAE 52.2 and EN779		
Frame	Aluminum/ GI/ SS - Flange type		
Gasket (optional)	Food grade, XLP / Neoprene		
Media	Non-woven synthetic media between Aluminum and HDPE mesh		
IPD at 2.5 m/s Air Velocity	6.5 to 7.5 mm wg		
Recommended Air Velocity	2.5 <i>mis</i> max		
FPD	38 mm wg		
Recommended Cleaning	at 28 mm wg		
Average Efficiency	60% ;,; Em < 80%		
Suitable Usage Condition	Up to 70°C and RH 70%		
Cleaning Properties	Water wash with / without mild detergent		
Standard Dimensions	H	W	D
(Non standard dimensions can be offered on request)	610	610	305/150
	610	305	305/150
	305	610	305/150
	305	305	305/150

Fine Filters Pleated Media - Cassette Type

Technical Data



Grade	F7 / MERV 13		
Standard	As per ASHRAE 52.2 and EN779		
Frame	Aluminum/ GI/ SS - Cassette type		
Gasket	Food grade, XLP / Neoprene		
Media	Non-woven synthetic media between Aluminum and HDPE mesh		
IPD at 2.5 m/s Air Velocity	7.5 to 8.5 mm wg		
Recommended Air Velocity	2.5 <i>mis</i> max		
FPD	38 mm wg		
Recommended Cleaning	at 28 mm wg		
Average Efficiency	80% ≤ Em < 90%		
Suitable Usage Condition	Upto 70°C and RH 70%		
Cleaning Properties	Water wash with / without mild detergent		
Standard Dimensions	H	W	D
(Non standard dimensions can be offered on request)	610	610	305/150
	610	305	305/150
	305	610	305/150
	305	305	305/150

Fine Filters Pleated Media - Flange Type

Technical Data



Grade	F7 / MERV 13		
Standard	As per ASHRAE 52.2 and EN779		
Frame	Aluminum/ GI/ SS - Flange type		
Gasket	Food grade, XLP / Neoprene		
Media	Non-woven synthetic media between Aluminum and HDPE mesh		
IPD at 2.5 m/s Air Velocity	7.5 to 8.5 mm wg		
Recommended Air Velocity	2.5 <i>mis</i> max		
FPD	38 mm wg		
Recommended Cleaning	at 28 mm wg		
Average Efficiency	80% ≤ Em < 90%		
Suitable Usage Condition	Upto 70°C and RH 70%		
Cleaning Properties	Water wash with / without mild detergent		
Standard Dimensions	H	W	D
(Non standard dimensions can be offered on request)	610	610	305/150
	610	305	305/150
	305	610	305/150
	305	305	305/150

Fine Filters Pleated Media - Cassette Type

Technical Data



Grade	F8 / MERV 14		
Standard	As per ASHRAE 52.2 and EN779		
Frame	Aluminum/ GI/ SS - Cassette type		
Gasket	Food grade, XLP / Neoprene		
Media	Non-woven synthetic media between Aluminum and HDPE mesh		
IPD at 2.5 m/s Air Velocity	9 to 10 mm wg		
Recommended Air Velocity	2.5 <i>mis</i> max		
FPD	38 mm wg		
Recommended Cleaning	at 28 mm wg		
Average Efficiency	90% :5 Em < 95%		
Suitable Usage Condition	Upto 70°C and RH 70%		
Cleaning Properties	Water wash with / without mild detergent		
Standard Dimensions	H	W	D
(Non standard dimensions can be offered on request)	610	610	305/150
	610	305	305/150
	305	610	305/150
	305	305	305/150

Fine Filters Pleated Media - Flange Type

Technical Data



Grade	F8 / MERV 14		
Standard	As per ASHRAE 52.2 and EN779		
Frame	Aluminum/ GI/ SS - Flange type		
Gasket	Food grade, XLP / Neoprene		
Media	Non-woven synthetic media between Aluminum and HDPE mesh		
IPD at 2.5 m/s Air Velocity	9 to 10 mm wg		
Recommended Air Velocity	2.5 <i>mis</i> max		
FPD	38 mm wg		
Recommended Cleaning	at 28 mm wg		
Average Efficiency	90% :5 Em < 95%		
Suitable Usage Condition	Up to 70°C and Rh 70%		
Cleaning Properties	Water wash with / without mild detergent		
Standard Dimensions	H	W	D
(Non standard dimensions can be offered on request)	610	610	305/150
	610	305	305/150
	305	610	305/150
	305	305	305/150

Bag Filter



Technical Data

Grade	FS / MERV 9 / MERV 10		
Standard	As per ASHRAE 52.2 and EN779		
Frame	Aluminum / GI / SS - Flange type		
Gasket	Food grade, XLP / Neoprene		
Media	Non-woven synthetic / SMF welded pocket		
Recommended Air Velocity	2.5 <i>mis</i> max		
FPD	45 mm wg		
Recommended Cleaning	at 30 mm wg		
Average Efficiency	40% :5 Em < 60%		
Suitable Usage Condition	Up to 70°C and RH 70%		
Cleaning Properties	Non washable		
Standard Dimensions	H	W	D
(Non standard dimensions can be offered on request)	610	610	305 / 370 / 610
	610	305	305 / 370 / 610
	305	610	305 / 370 / 610
	305	305	305 / 370 / 610

Bag Filter



Technical Data

Grade	F6 / MERV 11 / MERV 12		
Standard	As per ASHRAE 52.2 and EN779		
Frame	Aluminum / GI / SS - Flange type		
Gasket	Food grade, XLP / Neoprene		
Media	Non-woven synthetic / SMF welded pocket		
Recommended Air Velocity	2.5 <i>mis</i> max		
FPD	45 mm wg		
Recommended Cleaning	at 30 mm wg		
Average Efficiency	40% :5 Em < 80%		
Suitable Usage Condition	Up to 70°C and RH 70%		
Cleaning Properties	Non washable		
Standard Dimensions	H	W	D
(Non standard dimensions can be offered on request)	610	610	305 / 370 / 610
	610	305	305 / 370 / 610
	305	610	305 / 370 / 610
	305	305	305 / 370 / 610

Bag Filter



Technical Data

Grade	F7 / MERV 13		
Standard	As per ASHRAE 52.2 and EN779		
Frame	Aluminum / GI / SS - Flange type		
Gasket	Food grade, XLP / Neoprene		
Media	Non-woven synthetic / SMF welded pocket		
Recommended Air Velocity	2.5 <i>mis</i> max		
FPD	45 mm wg		
Recommended Cleaning	at 30 mm wg		
Average Efficiency	80% Em < 90%		
Suitable Usage Condition	Up to 70°C and RH 70%		
Cleaning Properties	Non washable		
Standard Dimensions	H	W	D
(Non standard dimensions can be offered on request)	610	610	305 / 370 / 610
	610	305	305 / 370 / 610
	305	610	305 / 370 / 610
	305	305	305 / 370 / 610

Bag Filter



Technical Data

Grade	F8 / MERV 14		
Standard	As per ASHRAE 52.2 and EN779		
Frame	Aluminum / GI / SS - Flange type		
Gasket	Food grade, XLP / Neoprene		
Media	Non-woven synthetic / SMF welded pocket		
Recommended Air Velocity	2.5 <i>mis</i> max		
FPD	45 mm wg		
Recommended Cleaning	at 30 mm wg		
Average Efficiency	90% Em < 95%		
Suitable Usage Condition	Up to 70°C and RH 70%		
Cleaning Properties	Non washable		
Standard Dimensions	H	W	D
(Non standard dimensions can be offered on request)	610	610	305 / 370 / 610
	610	305	305 / 370 / 610
	305	610	305 / 370 / 610
	305	305	305 / 370 / 610

UL Classified Bag Filter



Technical Data

Grade	MERV 14		
Standard	As per ASHRAE 52.2		
Frame	GI, Cassette type		
Media	Anti-microbial Fiberglass		
Sealant	FR grade		
IPD at 2.5m/s Air Velocity	13 mm wg		
Recommended Air Velocity	2.5 m/s max		
FPD	33 mm wg		
Average Efficiency	90% < E2, range 1μ to 3μ		
Humidity Resistance	56%		
Temperature Resistance	up to 80°C		
Standard Dimensions	H	W	D
(Non standard dimensions can be offered on request)	610	610	150
	610	305	150
	305	610	150
	305	305	150

Bag Filter



Technical Data

Grade	F9 / MERV 15		
Standard	As per ASHRAE 52.2 and EN779		
Frame	Aluminum/ GI/ SS - Flange type		
Gasket	Food grade, XLP / Neoprene		
Media	Non-woven synthetic/ SMF welded pocket		
Recommended Air Velocity	2.5 m/s max		
FPD	45 mm wg		
Recommended Cleaning	at 30 mm wg		
Average Efficiency	95% s Em		
Suitable Usage Condition	Up to 70°C and RH 70%		
Cleaning Properties	Non washable		
Standard Dimensions	H	W	D
(Nonstandard dimensions can be offered on request)	610	610	305 / 370 / 610
	610	305	305 / 370 / 610
	305	610	305 / 370 / 610
	305	305	305 / 370 / 610

Combination Deep Pleated Media Filter - Flange Type



Technical Data

Grade	Primary G4 / MERV 8, Secondary F7 / MERV 13		
Standard	As per ASHRAE 52.2 and EN779		
Frame	Aluminum / GI / SS - Flange type		
Gasket	Food grade, XLP / Neoprene		
Media	Non-woven synthetic media between aluminum and HOPE mesh for both		
Recommended Air Velocity	2.5 <i>mis</i> max		
FPD	38 mm wg		
Recommended Cleaning	at 25 mm wg		
Average Efficiency	80 % Em < 90%		
Suitable Usage Condition	Upto 70°C and RH 70%		
Cleaning Properties	Water wash with / without mild detergent		
Standard Dimensions	H	W	D
(Nonstandard dimensions can be offered on request)	610	610	380 / 305 / 150
	610	305	380 / 305 / 150
	305	610	380 / 305 / 150
	305	305	380 / 305 / 150

Combination Bag Filter - Flange Type



Technical Data

Grade	Primary G4 / MERV 8, Secondary F7 / MERV 13		
Standard	As per ASHRAE 52.2 and EN779		
Frame	Aluminum / GI / SS - Flange type		
Gasket	Food grade, XLP / Neoprene		
Media	Non woven synthetic media for primary filter and SMF welded pocket for secondary filter		
Recommended Air Velocity	2.5 <i>mis</i> max		
FPD	38 mm wg		
Recommended Cleaning	at 25 mm wg		
Average Efficiency	80% Em < 90%		
Suitable Usage Condition	Up to 70°C and RH 70%		
Cleaning Properties	Water wash with / without mild detergent		
Standard Dimensions	H	W	D
(Nonstandard dimensions can be offered on request)	610	610	380 / 305 / 150
	610	305	380 / 305 / 150
	305	610	380 / 305 / 150
	305	305	380 / 305 / 150

Super Fine (Semi HEPA), Deep Pleat Media - Cassette Type

Technical Data



Grade	F9 / MERV 15 / MERV 16		
Standard	As per ASHRAE 52.2 and EN779		
Frame	Aluminum / GI / <i>SSI</i> Particle Board - Cassette type		
Gasket	Food grade, XLP / Neoprene / Endless PU		
Media	Micro Glass Fiber with Al. foil separator		
IPD at 2.5 <i>mis</i> Air Velocity	12 to 15 mm wg		
Recommended Air Velocity	2.5 <i>mis</i> max		
FPD	45 mm wg		
Recommended Replacement	at 40 mm wg		
Average Efficiency	95 % ;; Em		
Suitable Usage Condition	Up to 70°C and RH 70%		
Standard Dimensions	H	W	D
(Nonstandard dimensions can be offered on request)	610	610	3051150
	610	305	305/150
	305	610	305/150
	305	305	305/150

Super Fine (Semi HEPA), Deep Pleat Media - Flange Type

Technical Data



Grade	F9 / MERV 15 / MERV 15 / MERV 16		
Standard	As per ASHRAE 52.2 and EN779		
Frame	Aluminum/ GI/ SS - Flange type		
Gasket	Food grade, XLP / Neoprene or Endless PU		
Media	Micro Glass Fiber with Al. foil separator		
IPD at 2.5 <i>mis</i> Air Velocity	12 to 15 mm wg		
Recommended Air Velocity	2.5 <i>mis</i> max		
FPD	45 mm wg		
Recommended Replacement	at 40 mm wg		
Average Efficiency	95%;; Em		
Suitable Usage Condition	Up to 70°C and RH 70%		
Standard Dimensions	H	W	D
(Non standard dimensions can be offered on request)	610	610	305/150
	610	305	305/150
	305	610	3051150
	305	305	3051150

HEPA, Deep Pleat Media - Cassette Type



Technical Data

Grade	H13		
Standard	As per EN1822		
Frame	Aluminum/ SS / Particle Board - Cassette type		
Gasket	Endless PU		
Media	Micro Glass Fiber with Al. foil separator		
IPD at 2.5 m/s Air Velocity	34 mm wg		
Recommended Air Velocity	Max 2.5 m/s for 300 deep and 1.25 m/s for 150 deep		
FPD	65 mm wg		
Recommended Replacement	at 45 mm wg		
Average Efficiency	;;: 99.97%at 0.3µm I;;: 99.95% at MPPS		
Suitable Usage Condition	Upto 70°C and RH 70%		
Standard Dimensions	H	W	D
(Nonstandard dimensions can be offered on request)	610	610	305/150
	610	305	305/150
	305	610	305/150
	305	305	305/150

HEPA, Deep Pleat Media - Flange Type



Technical Data

Grade	H13		
Standard	As per EN1822		
Frame	Aluminum / SS - Flange type		
Gasket	Endless PU		
Media	Micro Glass Fiber with Al. foil separator		
IPD at 2.5 m/s Air Velocity	34 mm wg		
Recommended Air Velocity	Max 2.5 m/s for 300 deep and 1.25 m/s for 150 deep		
FPD	65 mm wg		
Recommended Replacement	at 45 mm wg		
Average Efficiency	;;: 99.97%at 0.3µm I;;: 99.95% at MPPS		
Suitable Usage Condition	Upto 70°C and RH 70%		
Standard Dimensions	H	W	D
(Nonstandard dimensions can be offered on request)	610	610	305/150
	610	305	305/150
	305	610	305/150
	305	305	305/150

HEPA, Deep Pleat Media - Cassette Type



Technical Data

Grade	H14		
Standard	As per EN1822		
Frame	Aluminum/ SS / Particle Board - Cassette type		
Gasket	Endless PU		
Media	Micro Glass Fiber with Al. foil separator		
IPD at 2.5 m/s Air Velocity	38 mm wg		
Recommended Air Velocity	Max 2.5 m/s for 300 deep and 1.25 m/s for 150 deep		
FPD	70 mm wg		
Recommended Replacement	at 50 mm wg		
Average Efficiency	99.997% at 0.3 μ m / 99.995% at MPPS		
Suitable Usage Condition	Up to 70°C and RH 70%		
Standard Dimensions	H	W	D
(Nonstandard dimensions can be offered on request)	610	610	305/150
	610	305	305/150
	305	610	305/150
	305	305	305/150

HEPA, Deep Pleat Media - Flange Type



Technical Data

Grade	H14		
Standard	As per EN1822		
Frame	Aluminum / SS - Flange type		
Gasket	Endless PU		
Media	Micro Glass Fiber with Al. foil separator		
IPD at 2.5 m/s Air Velocity	38 mm wg		
Recommended Air Velocity	Max 2.5 m/s for 300 deep and 1.25 m/s for 150 deep		
FPD	70 mm wg		
Recommended Replacement	at 50 mm wg		
Average Efficiency	99.997% at 0.3 μ m / 99.995% at MPPS		
Suitable Usage Condition	Upto 70°C and RH 70%		
Standard Dimensions	H	W	D
(Nonstandard dimensions can be offered on request)	610	610	305/150
	610	305	305/150
	305	610	305/150
	305	305	305/150

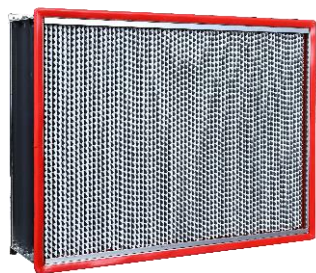
Minipleat HEPA Filter - Cassette Type



Technical Data

Grade	H14		
Standard	As per EN1822		
Frame	Aluminum/ SS / Particle Board - Cassette type		
Gasket	Endless PU / Gelseal		
Media	Micro Glass Fiber with hot melt separator		
Permissible Air Velocity and IPD	Filter Thickness	Velocity	IPDmmwg
	66,69,81	Up to 0.9 m/s	25
	90,105	Up to 1.35 m/s	25
FPD	70 mm wg		
Average Efficiency	99.997% at 0.3 μ m / 99.995% at MPPS		
Suitable Usage Condition	Upto 70°C and RH 70%		
Standard Dimensions	H	W	D
(Nonstandard dimensions can be offered on request)	610	610	66 / 69 / 81 / 90 / 105
	610	305	66 / 69 / 81 / 90 / 105
	305	610	66 / 69 / 81 / 90 / 105
	305	305	66 / 69 / 81 / 90 / 105

235°C (High Temp.) HEPA, Deep Pleat - Cassette Type

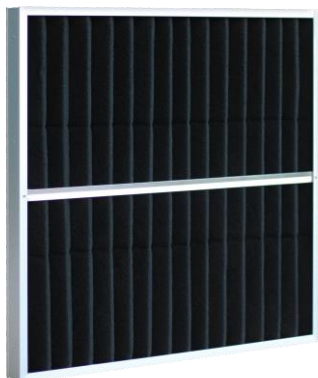


Technical Data

Grade	H14		
Standard	As per EN1822		
Frame	Aluminum / SS - Cassette type		
Gasket	Silicon Rubber		
Media	Micro Glass Fiber with Al. foil separator		
Sealant	HT Silicon / Ceramic adhesive		
IPD at 2.5 m/s Air Velocity	38 mm wg		
Recommended Air Velocity	Max 2.5 m/s for 300 deep and 1.25 m/s for 150 deep		
FPD	70 mm wg		
Recommended Replacement	at 50 mm wg		
Average Efficiency	99.997% at 0.3 μ m / 99.995% at MPPS		
Suitable Usage Condition	Upto 235°C and RH 60%		
Standard Dimensions	H	W	D
(Nonstandard dimensions can be offered on request)	610	610	305/150
	610	305	305/150
	305	610	305/150
	305	305	305/150

Activated Carbon Impregnated Media Filter - Cassette Type

Technical Data



Frame	Cardboard / Alu. Extruded Profile, Cassette Type		
Activated carbon content	75 gms./sq.mt.		
Media	Activated carbon impregnated, non-woven, synthetic		
Butane Activity	27% (Eq. CTC Activity 69%)		
Recommended Air Velocity	1.25 m/s max		
Average Efficiency	80%		
Humidity Resistance	70%		
Temperature Resistance	upto 70°C		
Deodorization Performance	> 80%		
Standard Dimensions (Nonstandard dimensions can be offered on request)	H	W	D
	610	610	50
	610	305	50
	305	610	50
	305	305	50

Gas Phase Filter

Technical Data



Frame construction	Metallic Frame with screen		
Media	Activated carbon (or other blended media)		
Butane Activity	23.5% minimum (Eq. CTC Activity 60%)		
Recommended Air Velocity	2.5 m/s max		
Performance	99.5% (initial)		
Humidity Resistance	RH 95% maximum		
Temperature Resistance	- 20 to 51°C		
Standard Dimensions (Nonstandard dimensions can be offered on request)	H	W	D
	610	610	150
	610	305	150/305
	305	610	150/305
	305	305	150/305/475

Automobile Paint Booth Filters



Technical Data

Grade	G3		
Test Method	As per En779		
Frame	Cardboard/ GI		
Media	Fiber Glass, 50 / 75 µm thick		
IPD at 2m/s Air Velocity	14 Pa		
Recommended Air Velocity	2.5 <i>mis</i> max		
FPD	20 Pa		
Avg. Arres. Efficiency of paint overspray	99%		
Temperature Resistance	Upto 180°C		
Standard Dimensions (Nonstandard dimensions can be offered on request)	H	W	D
	610	610	50
	610	305	50
	305	610	50
	305	305	50

High Temperature Oven Filter



Technical Data

Grade	G4		
Frame	Aluminium/ GI/ SS Flange type		
Gasket	HT Flate/ Rope		
Media	Oven Fiber Glass		
IPD	80 Pa		
Max. Air Velocity	@2.5 <i>mis</i> max		
FPD	300 Pa		
Average Arrestance	90% :5 Am		
Max Ambient Temperature	300°C		
Standard Dimensions (Nonstandard dimensions can be offered on request)	H	W	D
	610	610	50/305
	610	305	50/305
	305	610	50/305
	305	305	50/305

UL Classified Fine Filter



Technical Data

Grade	MERV 11		
Standard	As per ASHRAE 52.2		
Frame	GI, Cassette Type		
Media	Anti-microbial polyester MEDIA		
Sealant	PU with Zero VOE		
IPD at 2.5m/s Air Velocity	8mmwg		
Recommended Air Velocity	2.5 m/s max		
FPD	35 Pa		
Average Efficiency	85% < E3 range 3μ to 10μ		
Humidity Resistance	56%		
Temperature Resistance	upto 80°C		
Standard Dimensions	H	W	D
(Nonstandard dimensions can be offered on request)	610	610	150
	610	305	150
	305	610	150
	305	305	150

UL Classified Bag Filter

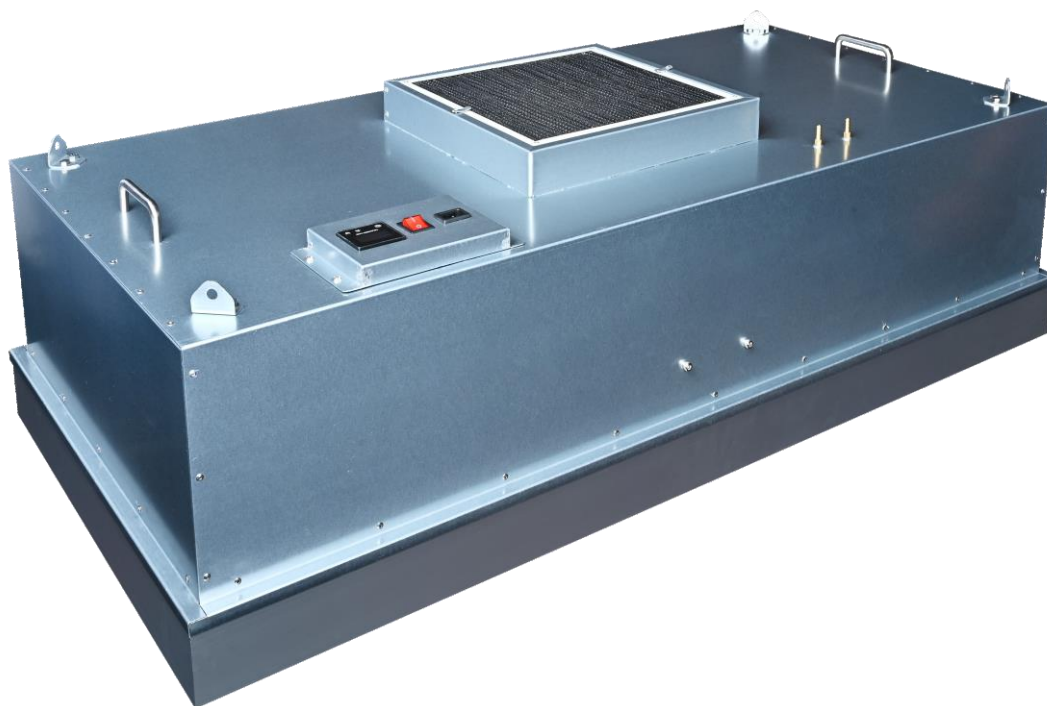


Technical Data

Grade	MERV 14		
Standard	As per ASHRAE 52.2		
Frame	GI, Cassette type		
Media	Anti-microbial Fiberglass		
Sealant	FR grade		
IPD at 2.5m/s Air Velocity	13 mm wg		
Recommended Air Velocity	2.5 m/s max		
FPD	33 mm wg		
Average Efficiency	90% < E2, range 1μ to 3μ		
Humidity Resistance	56%		
Temperature Resistance	upto 80°C		
Standard Dimensions	H	W	D
(Nonstandard dimensions can be offered on request)	610	610	150
	610	305	150
	305	610	150
	305	305	150

Fan Filter Unit

Citizen



Technical Data

Housing Construction	Aluminum / Galvanized steel / Stainless steel		
Motor	AC / EC motor with variable flow		
Controller (optional)	Dimmer/ VFD RS485		
Air Flow	0.45 to 0.68 mps (90 to 135 FPM - As required/ variable)		
Filter	Miniplate HEPA		
Filter Grade	H14		
Average Arrestance	99.997%		
Minimum Particle Arrestance	0.3 μ		
IPD at 0.45 m/s Air Velocity	120 Pa		
Recommended Air Velocity	0.68 m/s max.		
FPD	650 Pa		
Moisture Resistance	Good		
Max Ambient Temperature	70°C		
Standard Dimensions	H	W	D
(Non standard dimensions can be offered on request)	610	610	280 / 350
	610	1220	280 / 350
	450	450	280 / 350
	762	1220	280 / 350



Technical Data

Housing Construction	Aluminum / GI / SS - Flange type		
Volume Control Damper	Aluminum profile construction, aerodynamic opposed blade type		
Air Entry	Top or side options		
Damper Control Access	Room side		
Filter Face Protection	Perforated Grill		
Suitable Filter	Mini Pleat or Deep Pleat		
Standard Dimensions (Non standard dimensions can be offered on request)	H	W	D
	700	700	295 / 500

Air Filters Classification and general guidelines for their applications

Technical Data

General Classification	Arrestance or Dust Spot Efficiency	US ASHRAE 52.2	European Union EN779 Class		Typical Controlled Contaminant	Application
PRE Filter (G Class)	AFI < 65 %	MERV 1	GI	Am< 65%	Particles bigger than 10.0µm are visible through nacked eyes, such as construction dust, unpaved road dust, field fire dust, Boiler ash, Pollens, Spanish moss, Dust mites, Sand dust, Spray paint particles, Textile fibers, etc.	Domestic and Commercial comfort HVAC systems
	AFI 65%- 70%	MERV2	G2	65% \$Am< 80%		
	AFI 70%-75%	MERV3				
	AFI 75%-80%	MERV4				
	AFI 80%-85%	MERV 5	G3	80% \$Am< 90%	Particle size from 3.0µm to 10.0µm such as, Mold, Spores, Hair Spray, Cement Dust, Snuff, Milk Powder, Spray paint particles	Commercial HVAC, industrial HVAC, paint shops
	AFI 85%-90%	MERV6				
	NBS 25%-30%	MERV?	G4	90%\$Am		
	NBS 30%-35%	MERV8				
MEDIUM Filter (F Class)	NBS40%-45%	MERV9	F5	40% \$Em< 60%	Particle Size from 1.0µm to 3.0µm such as, Lead dust, Floor mill dust, Coal dust, Auto emissions, Nebulizer drops, solid water scales, Welding fumes, etc.	IAQ sensitive commercial & industrial HVAC, general healthcare HVAC applications
	NBS 50%-55%	MERV 10				
	NBS 60%-65%	MERV 11	F6	60%\$ Em< 80%		
	NBS 70%-75%	MERV 12				
	NBS 80%-85%	MERV 13	F7	80%\$ Em< 90%	Particle size from 0.3µm to 1.0µm such as, All bacteria, cooking oil fumes, Most smoke, Copier toners, Most face powders, Most paint pigments, particles released through sneezing.	IAQ sensitive commercial and industrial HVAC, surgical rooms, food industries, smoking lounges, thick crowd public places (Airports, Community Halls, Malls, Theatres, etc concerned about public health.)
	NBS 90%-95%	MERV 14	F8	90% \$Em< 95%		
	NBS> 95%	MERV 15	F9	95% \$ Em		
		MERV 16				

Air Filters Classification and general guidelines for their applications

Technical Data

Classification	Mean Fractional Efficiency	IEST RP-CC001.3	European Union EN1822 Class	European Union EN779 Class	Typical Controlled Contaminant	Application
HEPA Filter (H Class)	≥ 95% at 0.3μm	n/a	H10	≥ 85% at MPPS	Particle size bigger than 0.3μm such as, attached virus, Fine carbon dust, Sea salts, All combustion smoke, Radon descendants, etc.	All types of cleanrooms, operation theaters, manufacturing industry for electronics, hard disks, medical devices, semiconductors, nuclear, food and pharmaceutical products, etc.
	≥ 98% at 0.3μm		H11	≥ 95% at MPPS		
	≥ 99.97% at 0.3μm	TYPE A				
	≥ 99.99% at 0.3μm	TYPE C	H12	≥ 99.5% at MPPS		
	≥ 99.995% at 0.3μm		H13	≥ 99.95% at MPPS		
	≥ 99.999% at 0.3μm	TYPED	H14	≥ 99.995% at MPPS		
ULPA Filter (U Class)	≥ 99.9995% at 0.12μm	TYPE F	U15	≥ 99.9995% at MPPS	Particle size bigger than 0.12μm such as attached virus, Fine carbon dust, Sea salts, All combustion smoke, Radon descendants, etc.	Super cleanrooms, such as Pharma, Electronic industries, Medical, etc.
	≥ 99.99995% at 0.12μm		U16	≥ 99.99995% at MPPS		
	≥ 99.999995% at 0.12μm		U17	≥ 99.999995% at MPPS		

Abbreviations:

AFI : American Filter Institute

Am : Average Arrestance Efficiency for Coarse Filters

ASHRAE: American Society of Heating Refrigerating & Air-conditioning Engineers

Em : Average Efficiency for Fine Filters

HEPA High Efficiency Particulate Air Filter

IEST Institute of Environmental Sciences and Technology

MERV Minimum Efficiency Reporting Value

MPPS Most Penetrating Particle Size

NBS National Bureau of Standards

ULPA Ultra Low Penetration Air Filter

Citizen Product Range

Laboratory Furnishing Products

Fume Hoods & Work Stations
Storage Cabinets & Racks
Spot Extractors, Safety Shower & Eye Wash
Valves, Taps & other accessories

Animal House Products

Ventilated Caging Systems for rodents
Caging System for rodents and large lab animals
Animal Change Station & Bedding Disposal Station
Hen Isolators
Enrichment Parts, Trolleys other lab accessories

Clean Room Products

Clean Room Furniture & Equipment

Air Filtration Products

Particulate Air Filters & Purification Devices

Media Contacts

Please reach out via following contacts

Name	Contact Information
Jude R. Fernando - Senior Consultant PhD (Reading), MBA, PG Dip., Dip. HVAC PMP, Lean (Green Belt) No 25, Anandarama Road, Moratumulla, Moratuwa	0712504509 / 0112655601 fernandojude654@gmail.com